

TECHNICAL BOOK

TC90 *TC100*

TC130 *TC160*

TC200 *TC260*

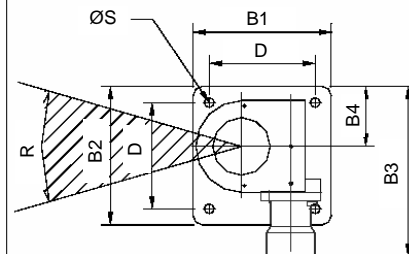
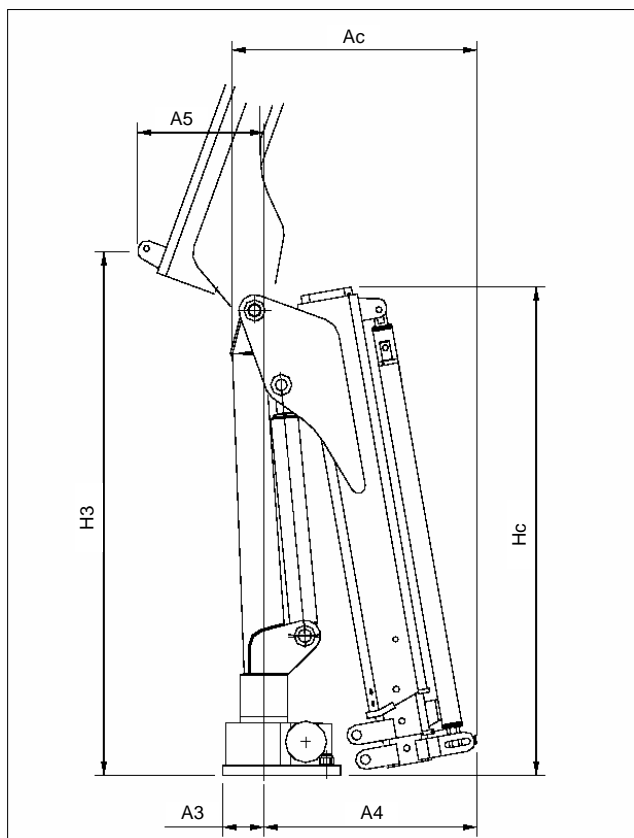
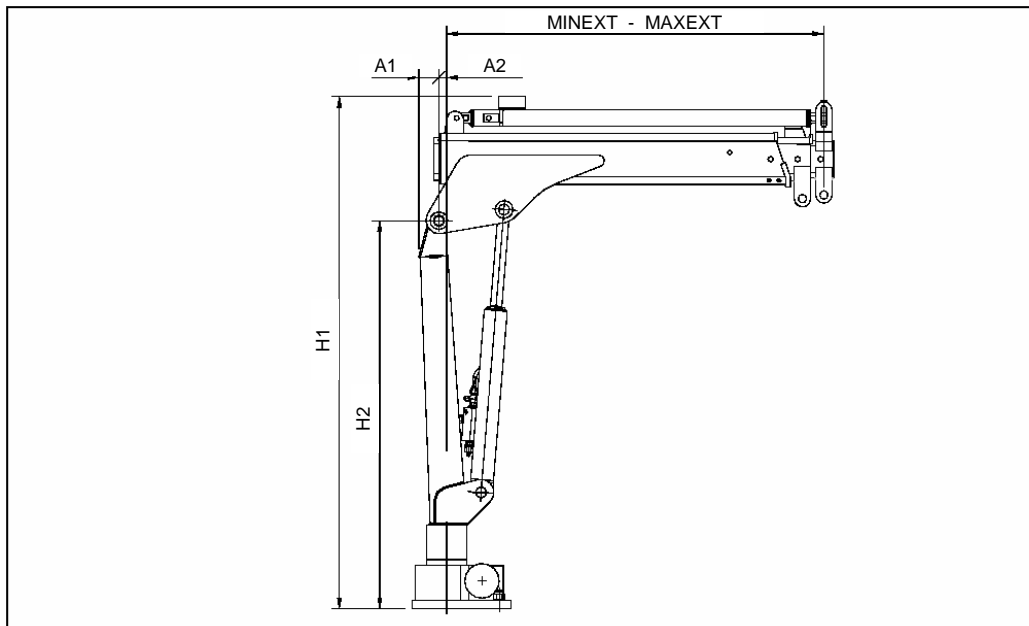
TC300 *TC350*



TECHNICAL DATA

		TC90	TC100	TC130	TC160	TC200	TC260	TC300	TC350
Max dynamic moment - daNm - ft lb		1068 7875	1135 8370	1570 11580	1660 12240	2405 17730	2830 20870	3290 24260	4330 31940
Std crane weight (crane+oil+installation kit+ std stabilizers) - kg - lb	.1	145 320	145 320	175 385	175 385	330 730	355 785	395 870	445 980
	.2	165 365	165 365	200 440	200 440	355 785	390 860	430 950	480 1060
	.3	-	-	-	-	380 840	410 905	450 990	510 1125
	.4	-	-	-	-	-	-	-	540 1190
Max capacity - kg - lb	.1	790 1738	860 1890	1175 2585	1315 2895	1590 3500	1865 4100	2055 4520	2390 5295
	.2	740 1628	800 1760	1100 2420	1230 2705	1485 3255	1750 3850	1935 4255	2255 4970
	.3	-	-	-	-	1270 2795	1565 3440	1830 4025	2130 4695
	.4	-	-	-	-	-	-	-	2010 4430
Max oil flow to control valve - l/min - gal/min		5.0 1.3	5.0 1.3	6.0 1.6	6.0 1.6	8.0 2.1	8.0 2.1	10 2.6	10 2.6
Max working pressure - bar - psi		170 2470	180 2610	150 2180	175 2540	160 2320	175 2540	160 2320	175 2540
Max slewing moment - daNm - ft lb		170 1250	170 1250	350 2580	350 2580	350 2580	400 2950	450 3320	450 3320
Slewing angle - °		350°	350°	350°	350°	350°	350°	350°	395°
Oil tank capacity - l - gal		17.5 4.6	17.5 4.6	17.5 4.6	17.5 4.6	17.5 4.6	17.5 4.6	17.5 4.6	17.5 4.6
Power needed by the pump - kW - HP		1.4 1.9	1.5 2.0	2.0 2.7	2.0 2.7	2.1 2.9	2.3 3.1	2.7 3.6	2.9 3.9
Design standards		DIN 15018 / EN 12999							

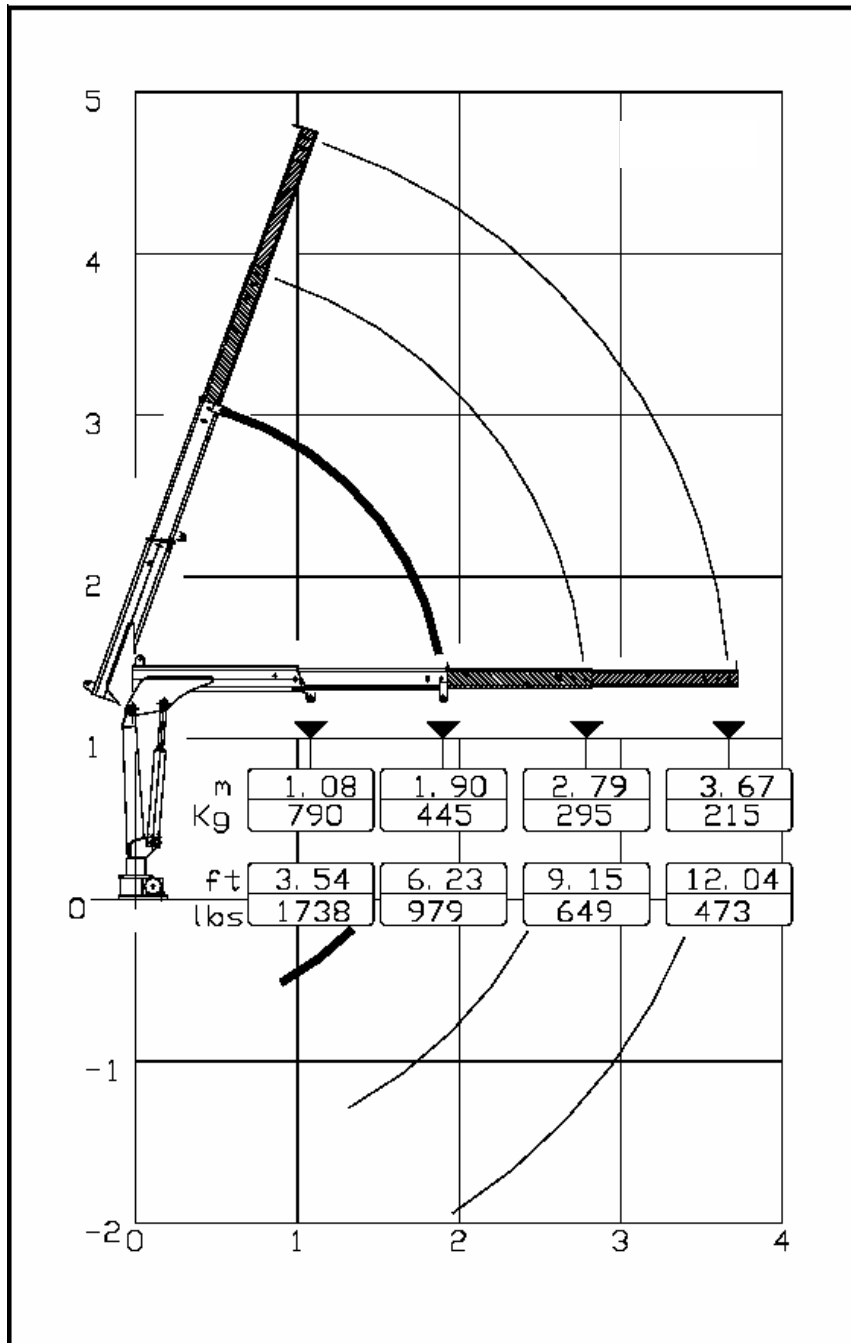
DIMENSIONS



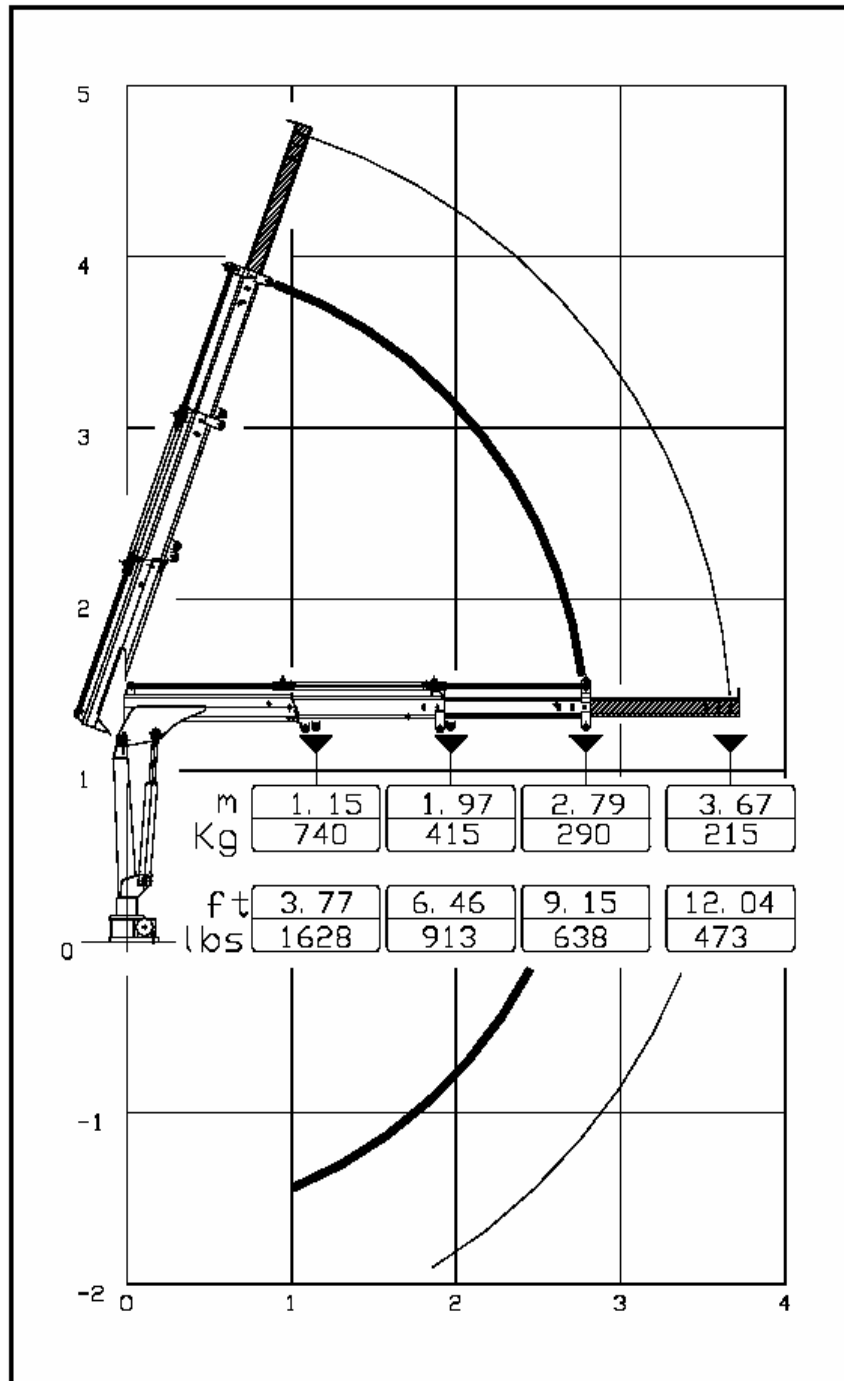
DIMENSIONS

mm inches version	TC 90 TC 100		TC 130 TC 160		TC 200			TC 260			TC 300			TC 350			
	.1	.2	.1	.2	.1	.2	.3	.1	.2	.3	.1	.2	.3	.1	.2	.3	.4
MINEXT	1080 3' 7"	1148 3' 9"	1083 3' 7"	1148 3' 9"	1245 4' 1"	1327 4' 4"	1398 4' 7"	1275 4' 2"	1345 4' 5"	1415 4' 8"	1330 4' 4"	1409 4' 7"	1479 4' 10"	1443 4' 9"	1518 5'	1593 5' 3"	1668 5' 6"
MAXEXT	1900 6' 3"	2788 9' 2"	1903 6' 3"	2788 9' 2"	2170 7' 1"	3177 10' 5"	4173 13' 8"	2264 7' 3"	3259 10' 6"	4190 13' 9"	2260 7' 5"	3259 10' 8"	4254 13' 11"	2503 8' 2"	3638 11' 11"	4773 15' 8"	5908 19' 5"
A1	61 2.4"	61 2.4"	58 2.3"	58 2.3"	40 1.6"	40 1.6"	40 1.6"	40 1.6"	40 1.6"	40 1.6"	119 4.7"	119 4.7"	119 4.7"	83 3.3"	83 3.3"	83 3.3"	83 3.3"
A2	24 0.94"	24 0.94"	24 0.94"	24 0.94"	84 3.3"	84 3.3"	84 3.3"	84 3.3"	84 3.3"	84 3.3"	20 0.79"	20 0.79"	20 0.79"	47 1.85"	47 1.85"	47 1.85"	47 1.85"
A3	105 4.2"	105 4.2"	170 6.7"	170 6.7"	135 5.3"	135 5.3"	135 5.3"	130 5.2"	130 5.2"	130 5.2"	140 5.5"	140 5.5"	140 5.5"	140 5.5"	140 5.5"	140 5.5"	140 5.5"
A4	490 19.3"	542 21.4"	491 19.3"	542 21.4"	565 22.2"	580 22.9"	738 29.1"	780 30.7"	850 33.5"	850 33.5"	590 23.2"	615 24.2"	615 24.2"	836 32.9"	900 35.4"	900 35.4"	900 35.4"
A5	322 12.7"	322 12.7"	267 10.5"	267 10.5"	330 13"	330 13"	330 13"	350 13.8"	350 13.8"	350 13.8"	235 9.3"	235 9.3"	235 9.3"	285 11.3"	285 11.3"	285 11.3"	285 11.3"
Ac	572 22.5"	624 24.6"	573 22.5"	624 24.6"	688 27.1"	700 27.6"	860 33.9"	930 36.6"	1000 39.4"	1000 39.4"	705 27.8"	730 28.8"	730 28.8"	966 38"	1030 40.6"	1030 40.6"	1030 40.6"
B1	300 11.8"	300 11.8"	310 12.2"	310 12.2"	310 12.2"	310 12.2"	310 12.2"	310 12.2"	310 12.2"	310 12.2"	332 13.1"	332 13.1"	332 13.1"	331 13.1"	331 13.1"	331 13.1"	331 13.1"
B2	300 11.8"	300 11.8"	300 11.8"	300 11.8"	300 11.8"	300 11.8"	300 11.8"	300 11.8"	300 11.8"	300 11.8"	300 11.8"	300 11.8"	300 11.8"	300 11.8"	300 11.8"	300 11.8"	300 11.8"
B3	370 14.6"	370 14.6"	450 17.7"	450 17.7"	450 17.7"	450 17.7"	450 17.7"	450 17.7"	450 17.7"	450 17.7"	450 17.7"	450 17.7"	450 17.7"	440 17.4"	440 17.4"	440 17.4"	440 17.4"
B4	130 5.1"	130 5.1"	150 5.9"	150 5.9"	150 5.9"	150 5.9"	150 5.9"	150 5.9"	150 5.9"	150 5.9"	150 5.9"	150 5.9"	150 5.9"	150 5.9"	150 5.9"	150 5.9"	150 5.9"
D	230 9.1"	230 9.1"	230 9.1"	230 9.1"	230 9.1"	230 9.1"	230 9.1"	230 9.1"	230 9.1"	230 9.1"	230 9.1"	230 9.1"	230 9.1"	230 9.1"	230 9.1"	230 9.1"	230 9.1"
H1	1560 61.4"	1560 61.4"	1518 59.8"	1518 59.8"	1840 72.4"	1840 72.4"	1840 72.4"	1840 72.4"	1840 72.4"	1840 72.4"	1907 75.1"	1907 75.1"	1907 75.1"	2032 80"	2032 80"	2032 80"	2032 80"
H2	1180 46.5"	1180 46.5"	1182 46.5"	1182 46.5"	1434 56.5"	1434 56.5"	1434 56.5"	1434 56.5"	1434 56.5"	1434 56.5"	1505 59.3"	1505 59.3"	1505 59.3"	1612 63.5"	1612 63.5"	1612 63.5"	1612 63.5"
H3	1328 52.3"	1328 52.3"	1289 50.7"	1289 50.7"	1615 63.6"	1615 63.6"	1615 63.6"	1615 63.6"	1615 63.6"	1615 63.6"	1715 67.5"	1715 67.5"	1715 67.5"	1748 68.8"	1748 68.8"	1748 68.8"	1748 68.8"
Hc	1240 48.8"	1240 48.8"	1241 48.8"	1241 48.8"	1485 58.5"	1485 58.5"	1485 58.5"	1485 58.5"	1485 58.5"	1485 58.5"	1585 62.4"	1585 62.4"	1585 62.4"	1702 67"	1702 67"	1702 67"	1702 67"
R	32°	32°	25°	25°	25°	25°	25°	25°	25°	25°	25°	25°	25°	35°	35°	35°	35°
ØS	21 0.83"	21 0.83"	21 0.83"	21 0.83"	21 0.83"	21 0.83"	21 0.83"	21 0.83"	21 0.83"	21 0.83"	21 0.83"	23 0.91"	23 0.91"	23 0.91"	23 0.91"	23 0.91"	23 0.91"

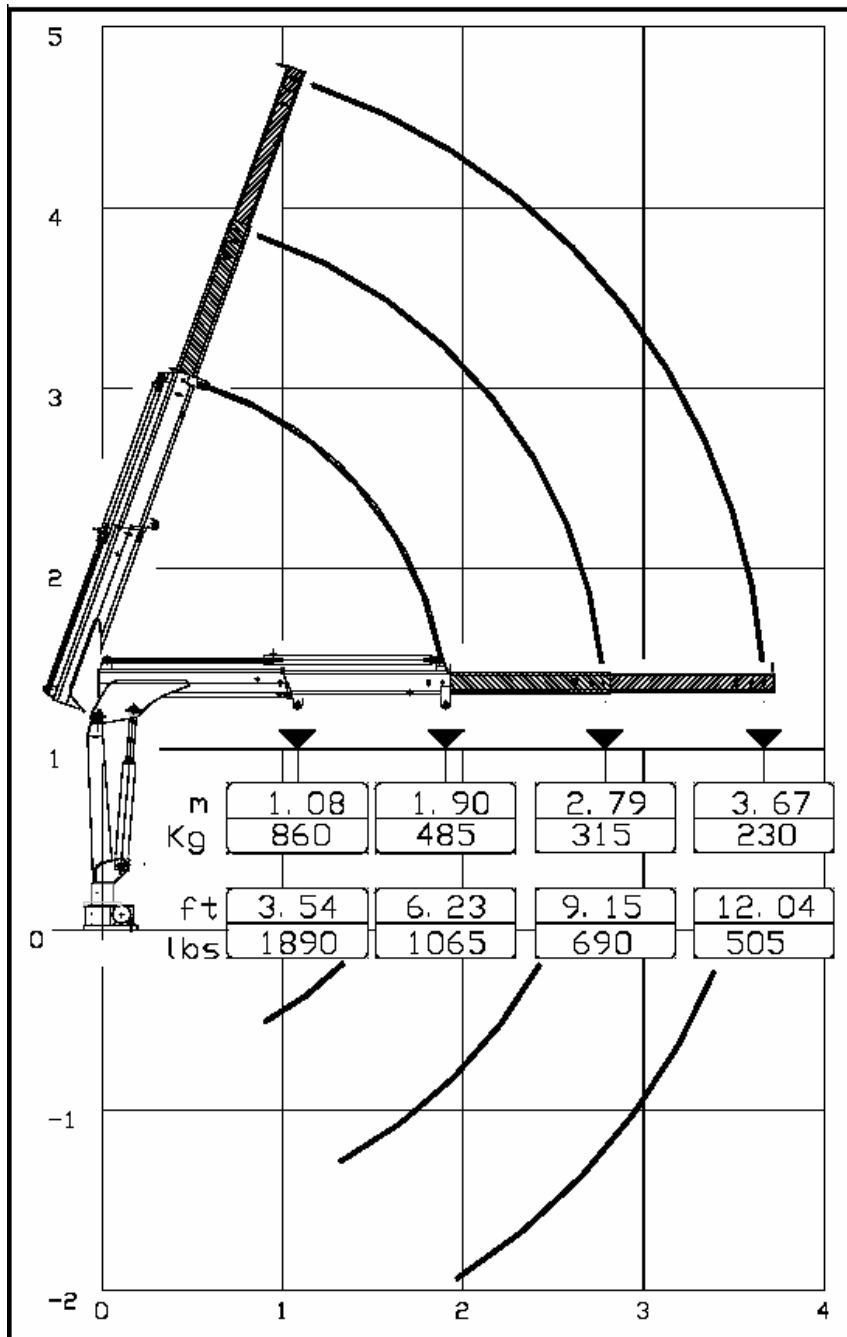
LOAD DIAGRAM TC 90.1



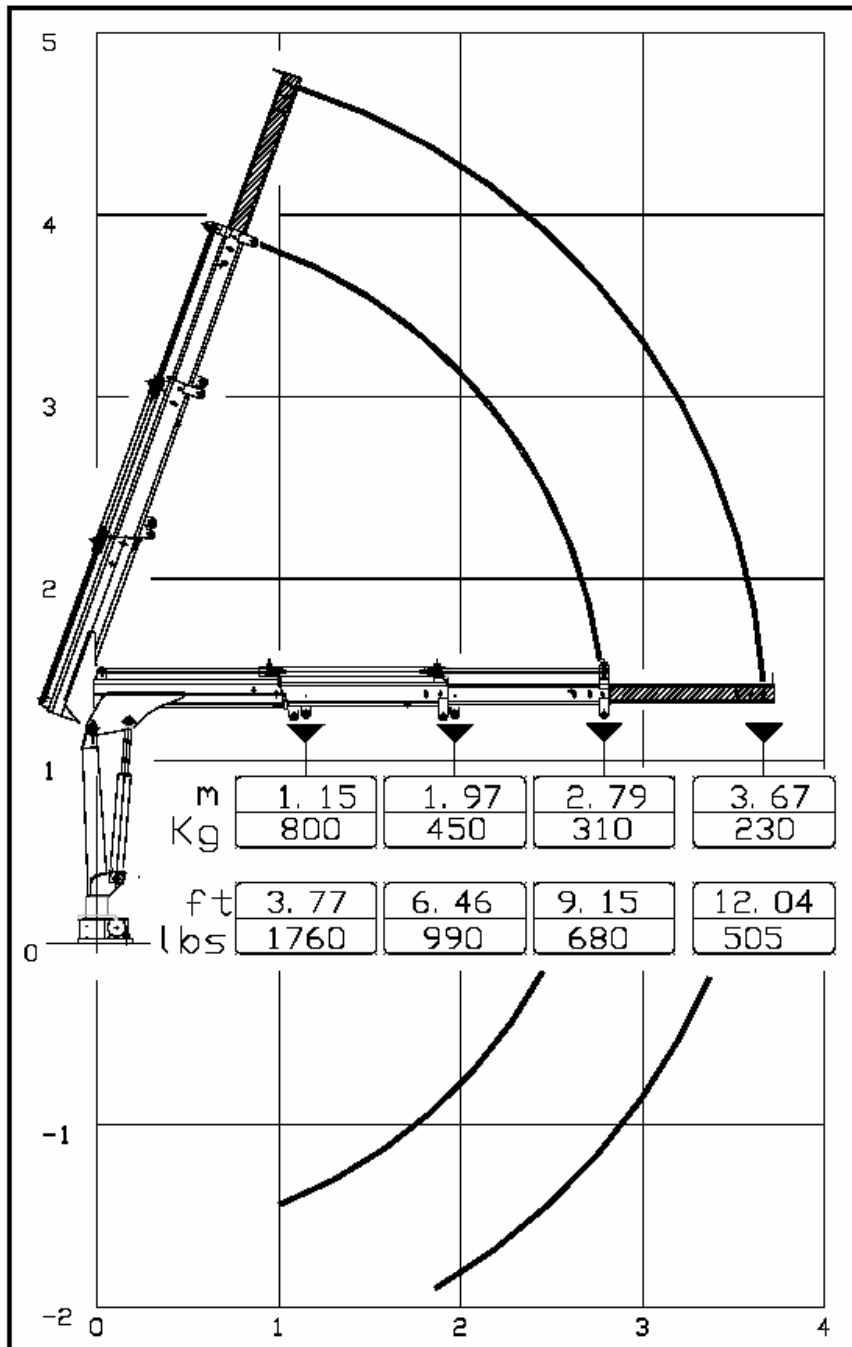
LOAD DIAGRAM TC 90.2



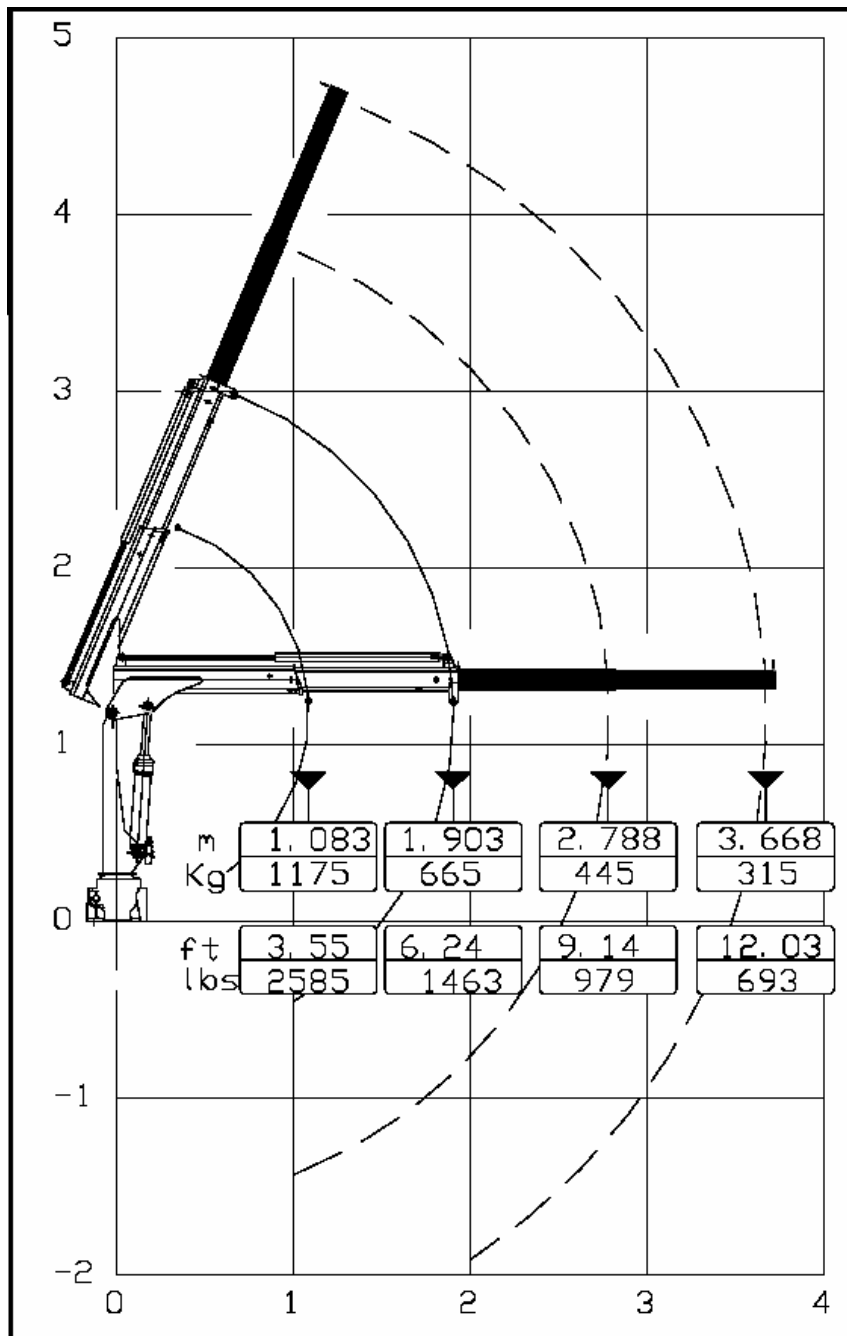
LOAD DIAGRAM TC 100.1



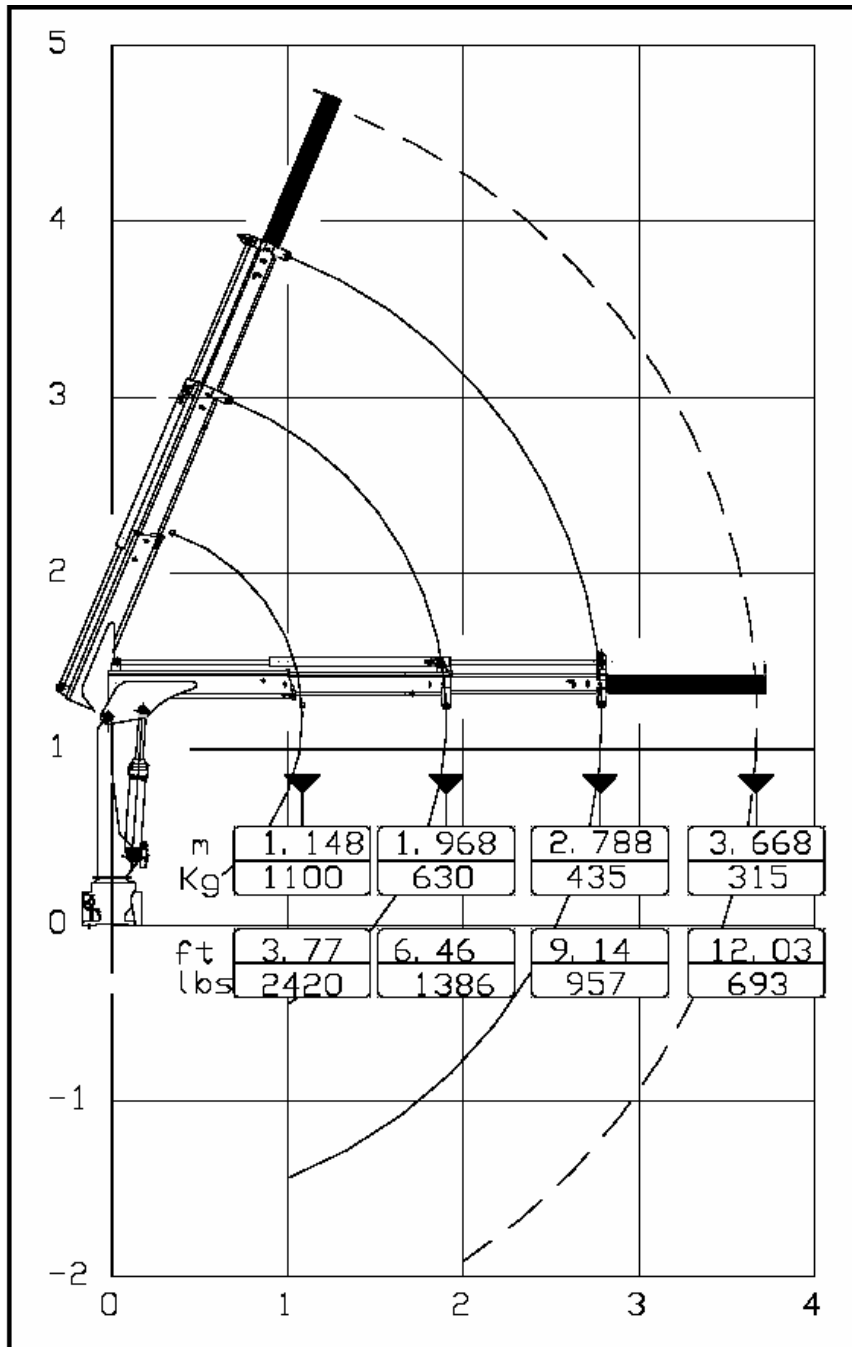
LOAD DIAGRAM TC 100.2



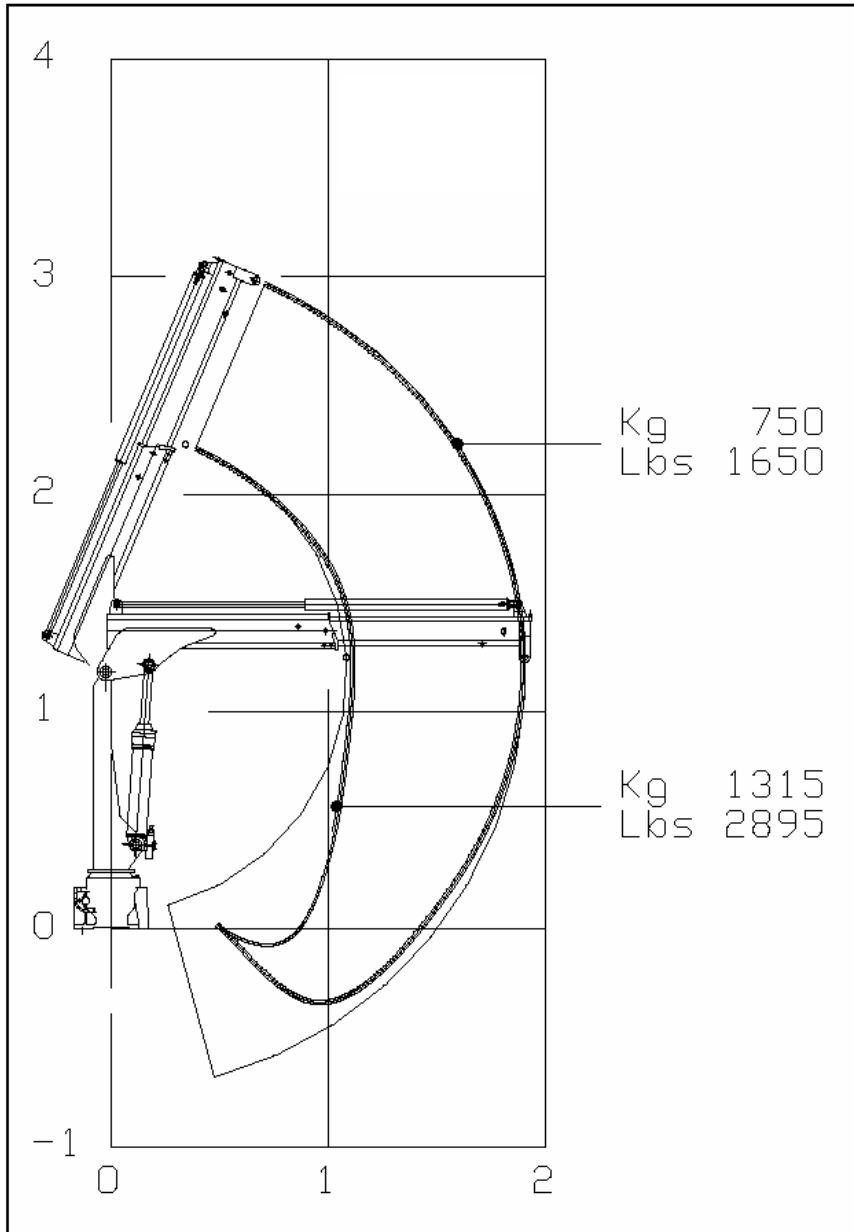
LOAD DIAGRAM TC 130.1



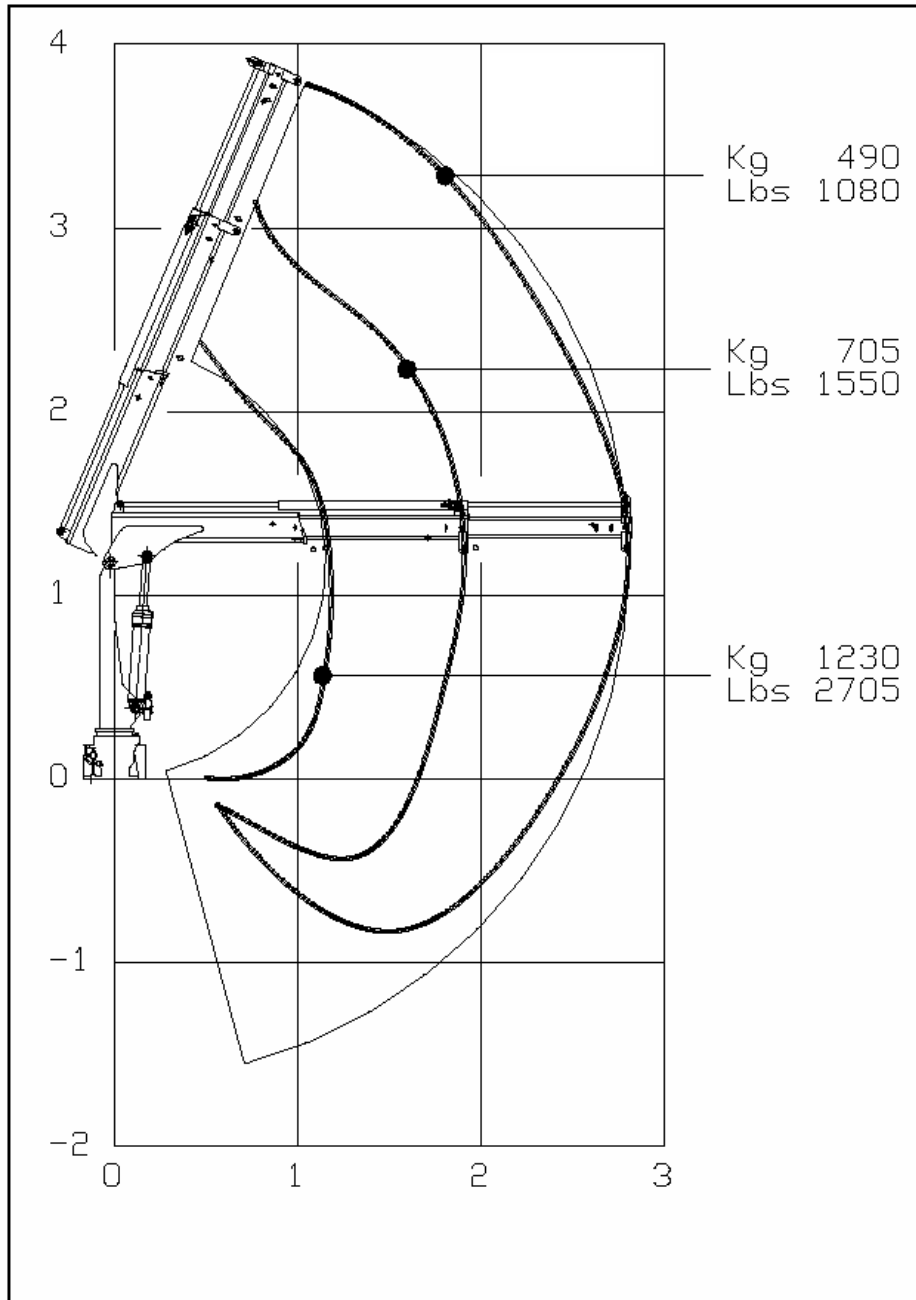
LOAD DIAGRAM
TC 130.2



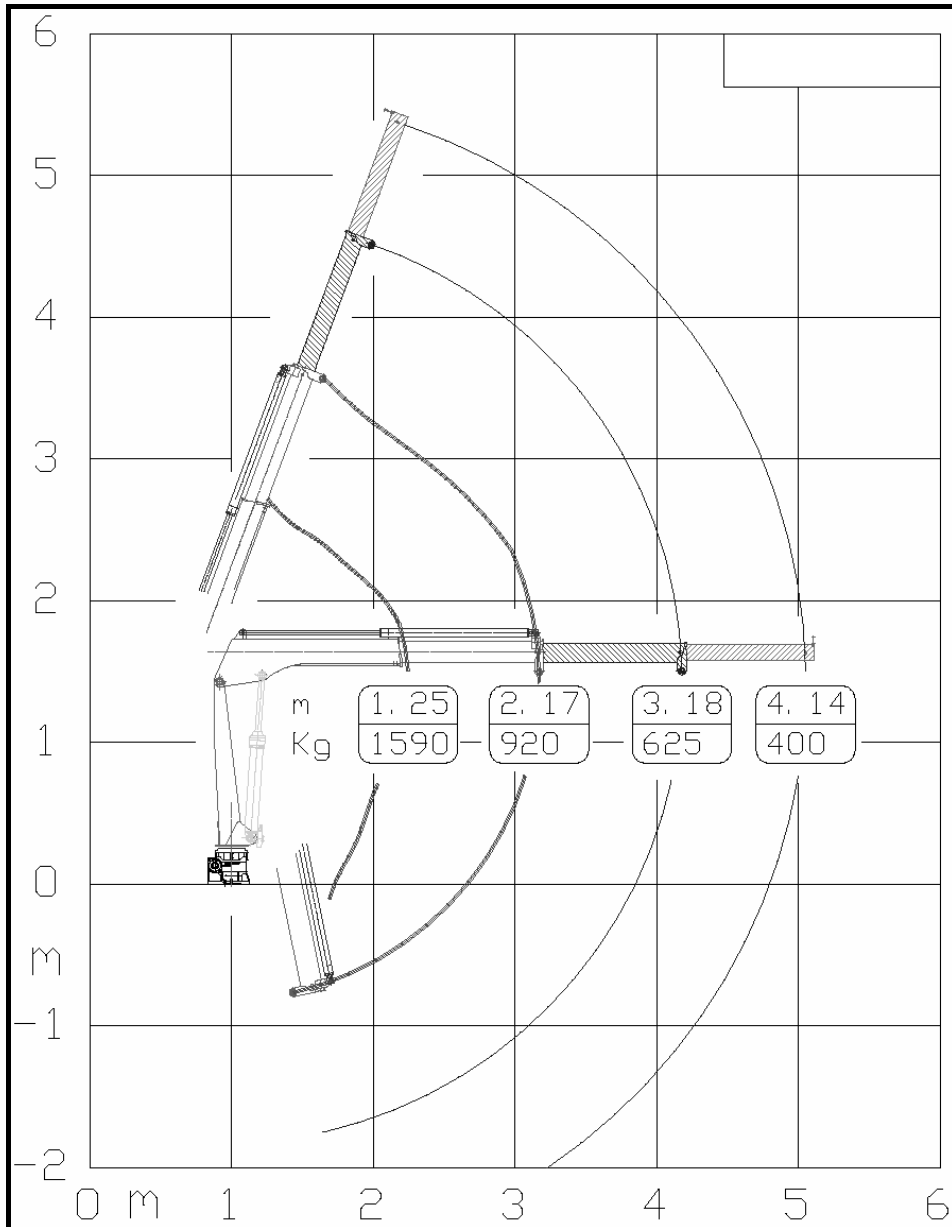
LOAD DIAGRAM TC 160.1



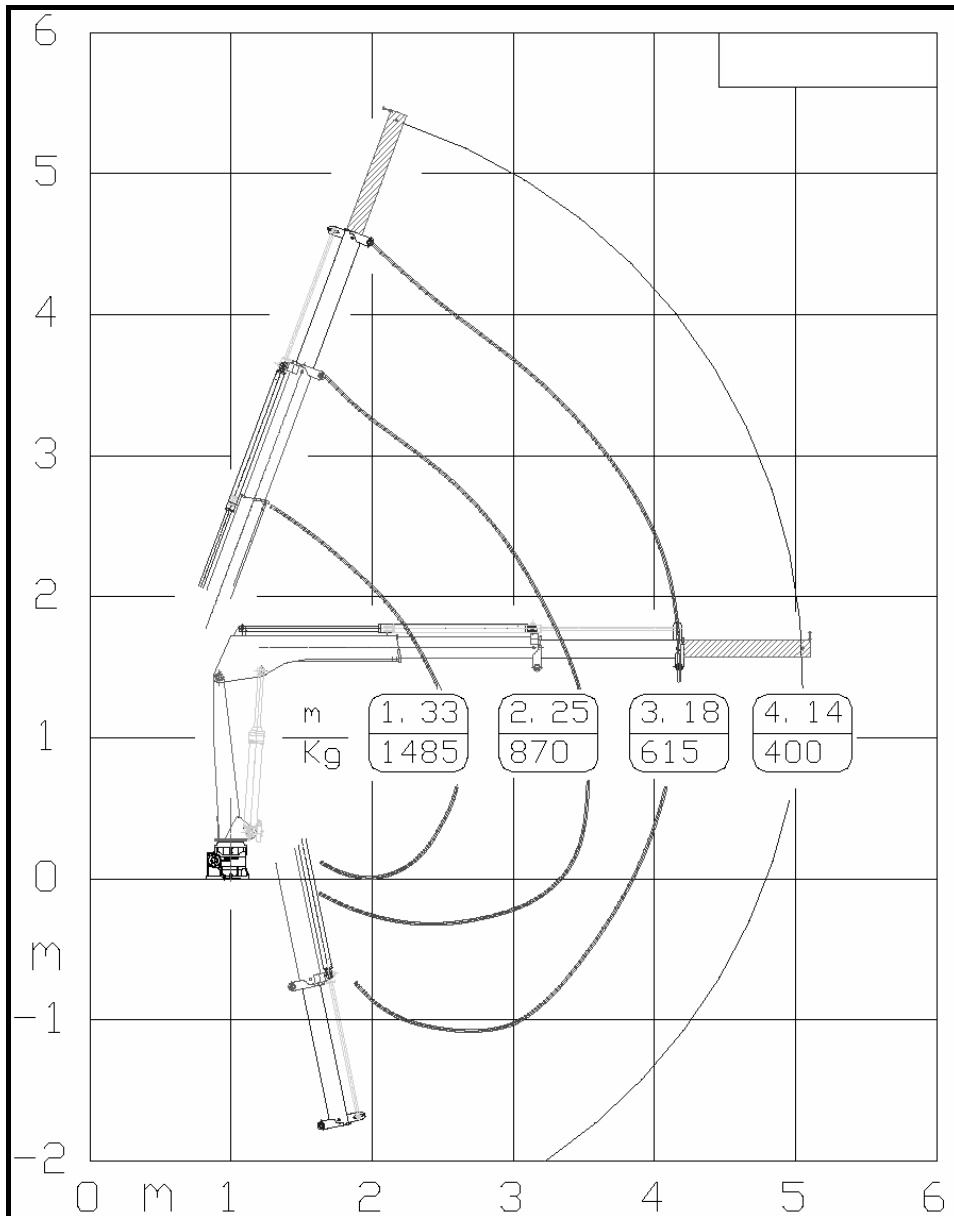
LOAD DIAGRAM TC 160.2



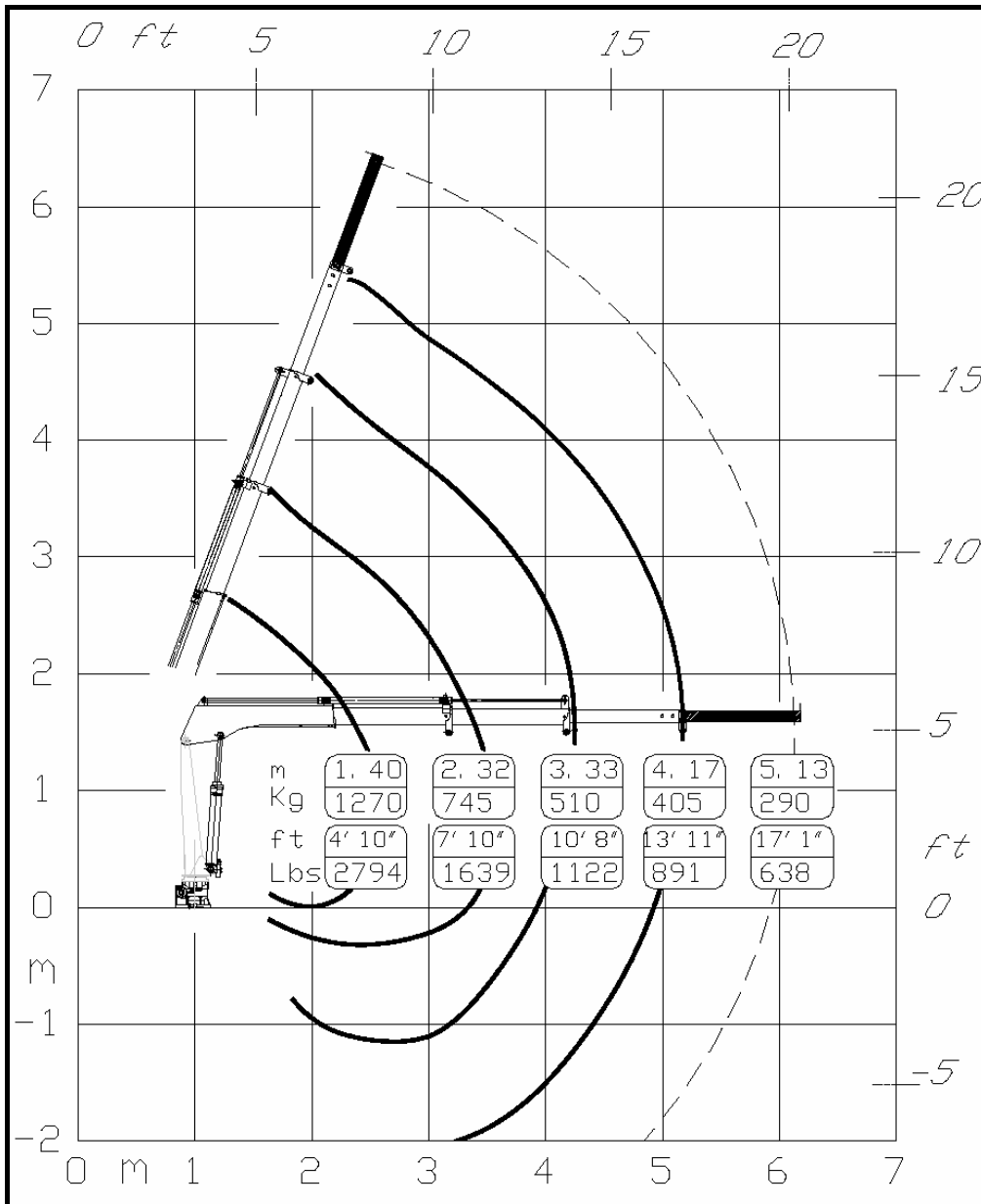
LOAD DIAGRAM TC 200.1



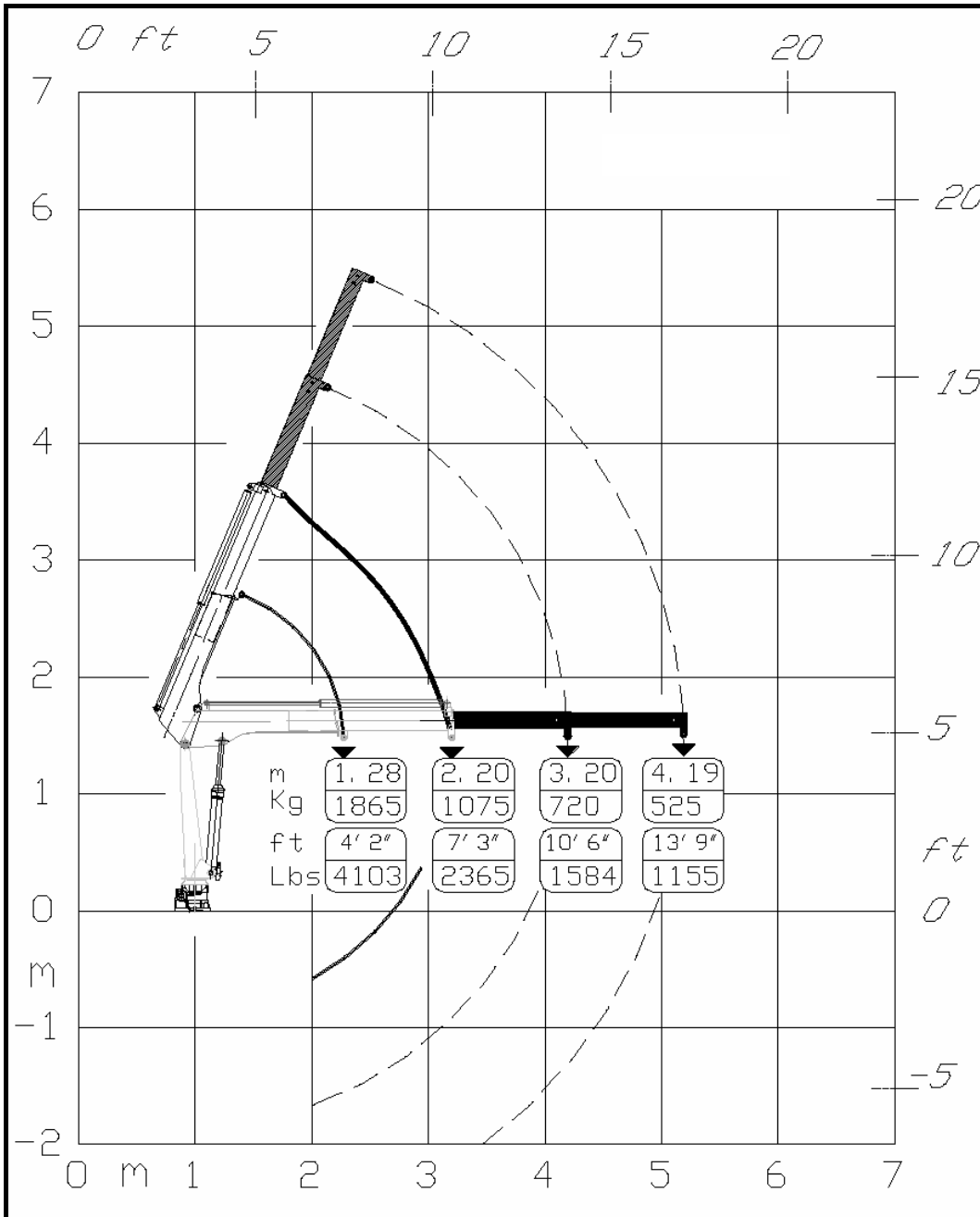
LOAD DIAGRAM TC 200.2



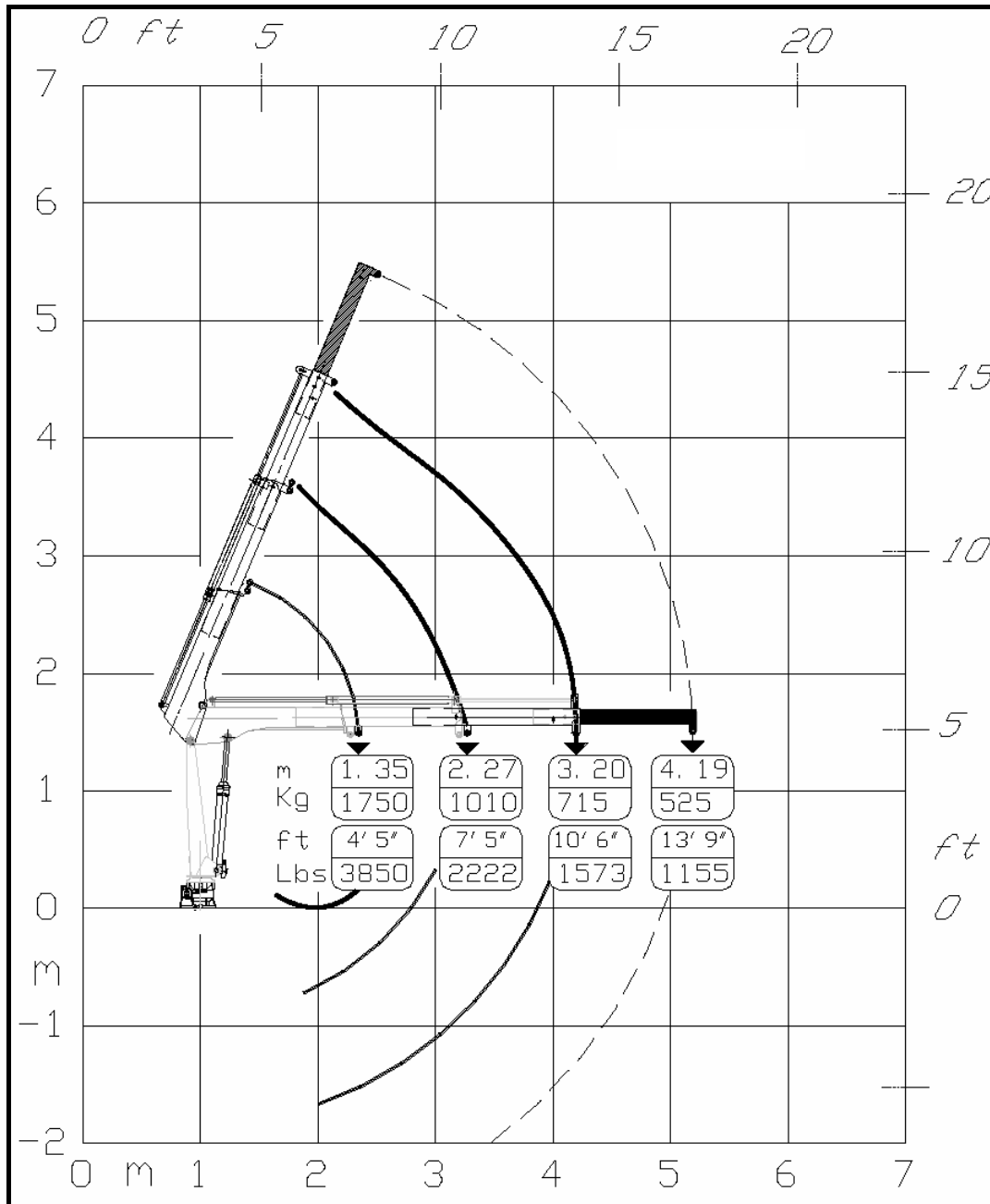
LOAD DIAGRAM TC 200.3



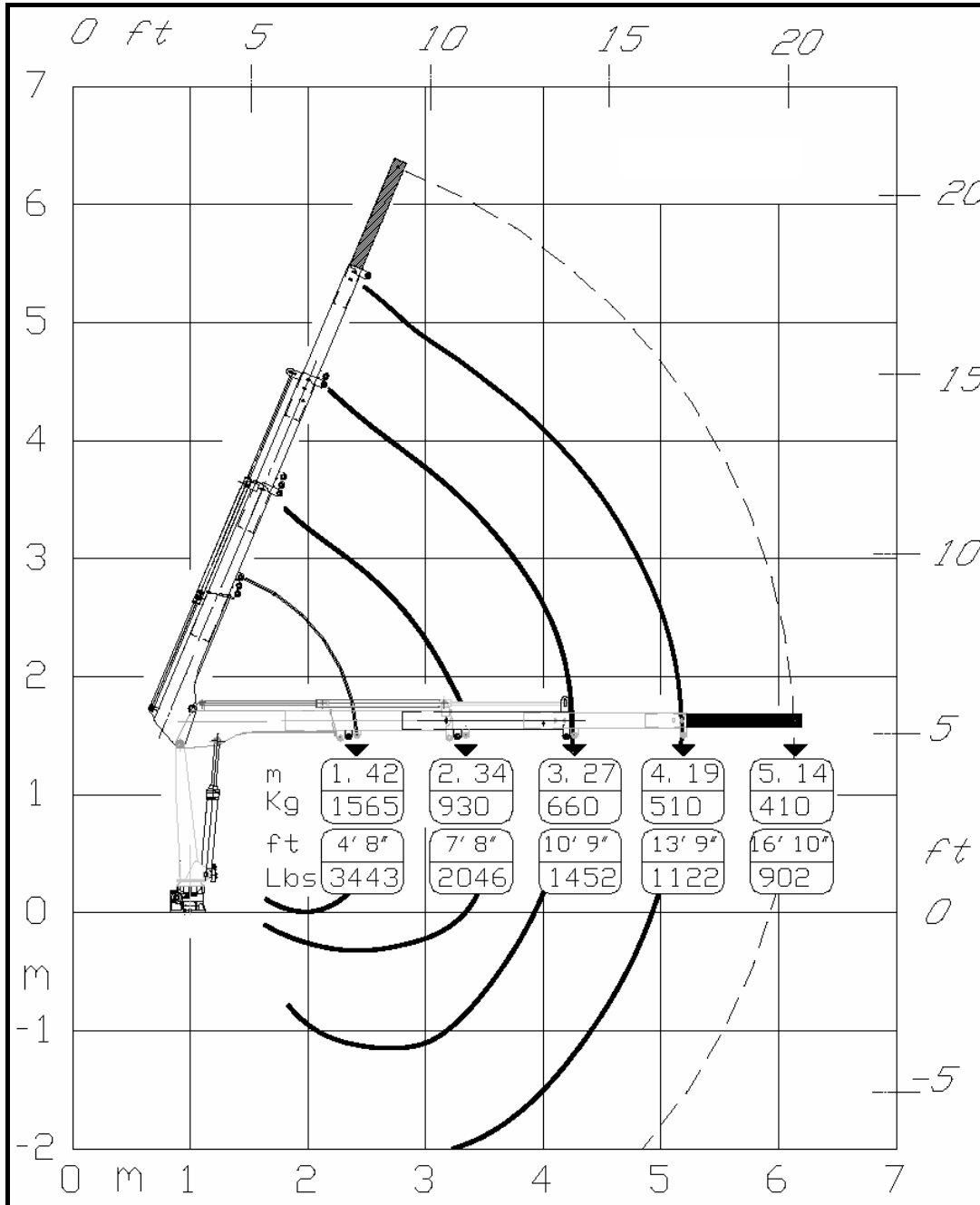
LOAD DIAGRAM TC 260.1



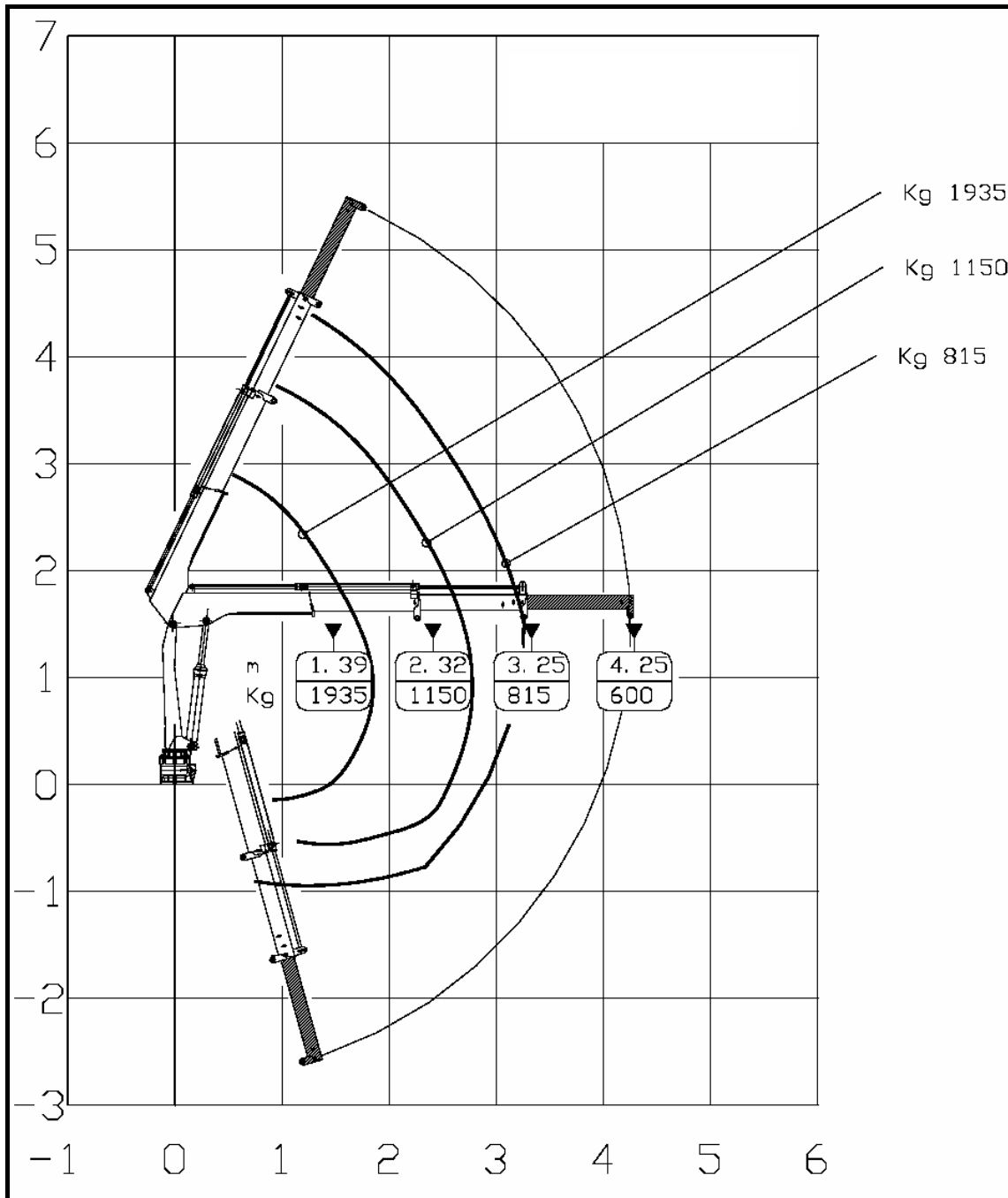
LOAD DIAGRAM TC 260.2



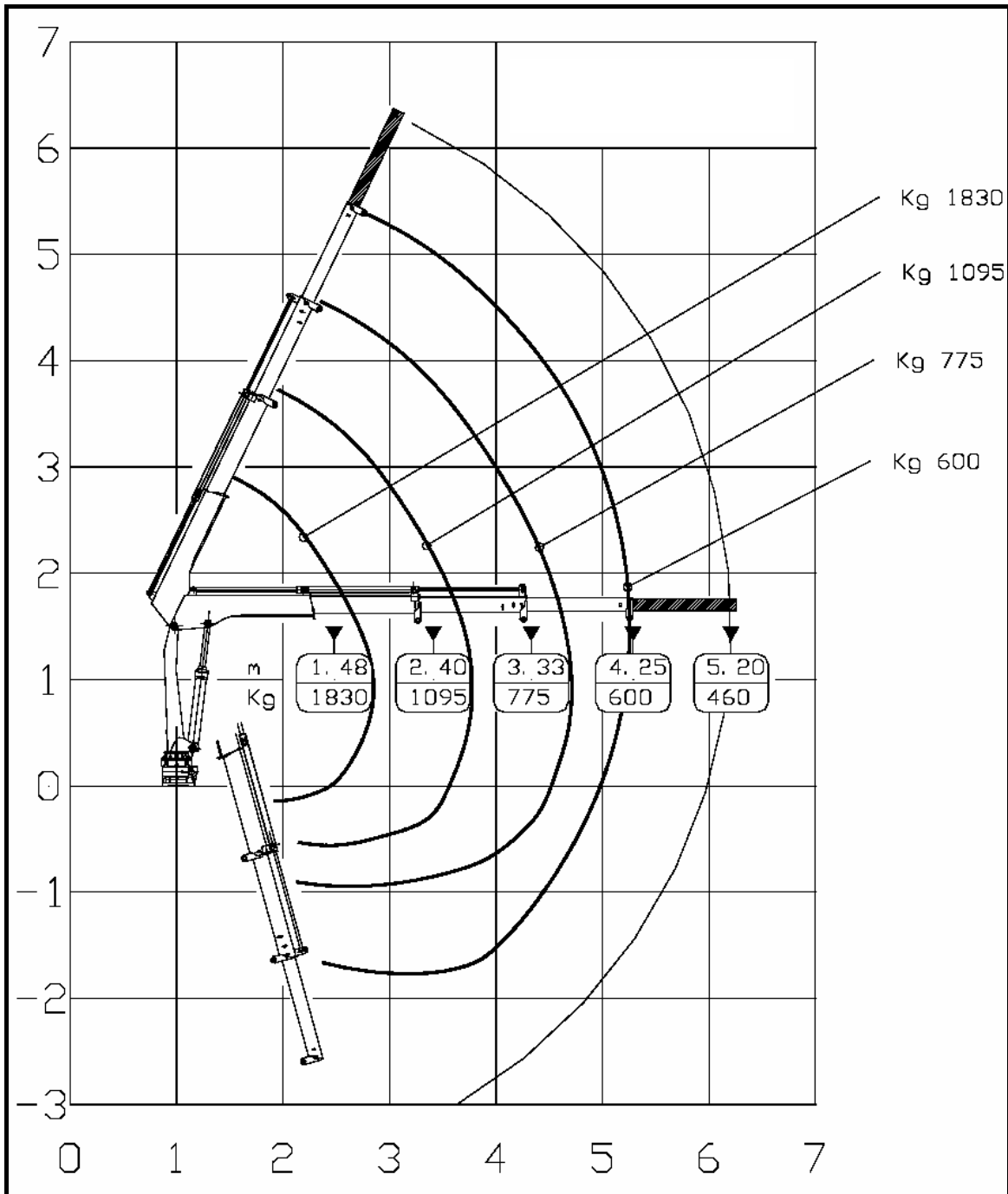
LOAD DIAGRAM TC 260.3



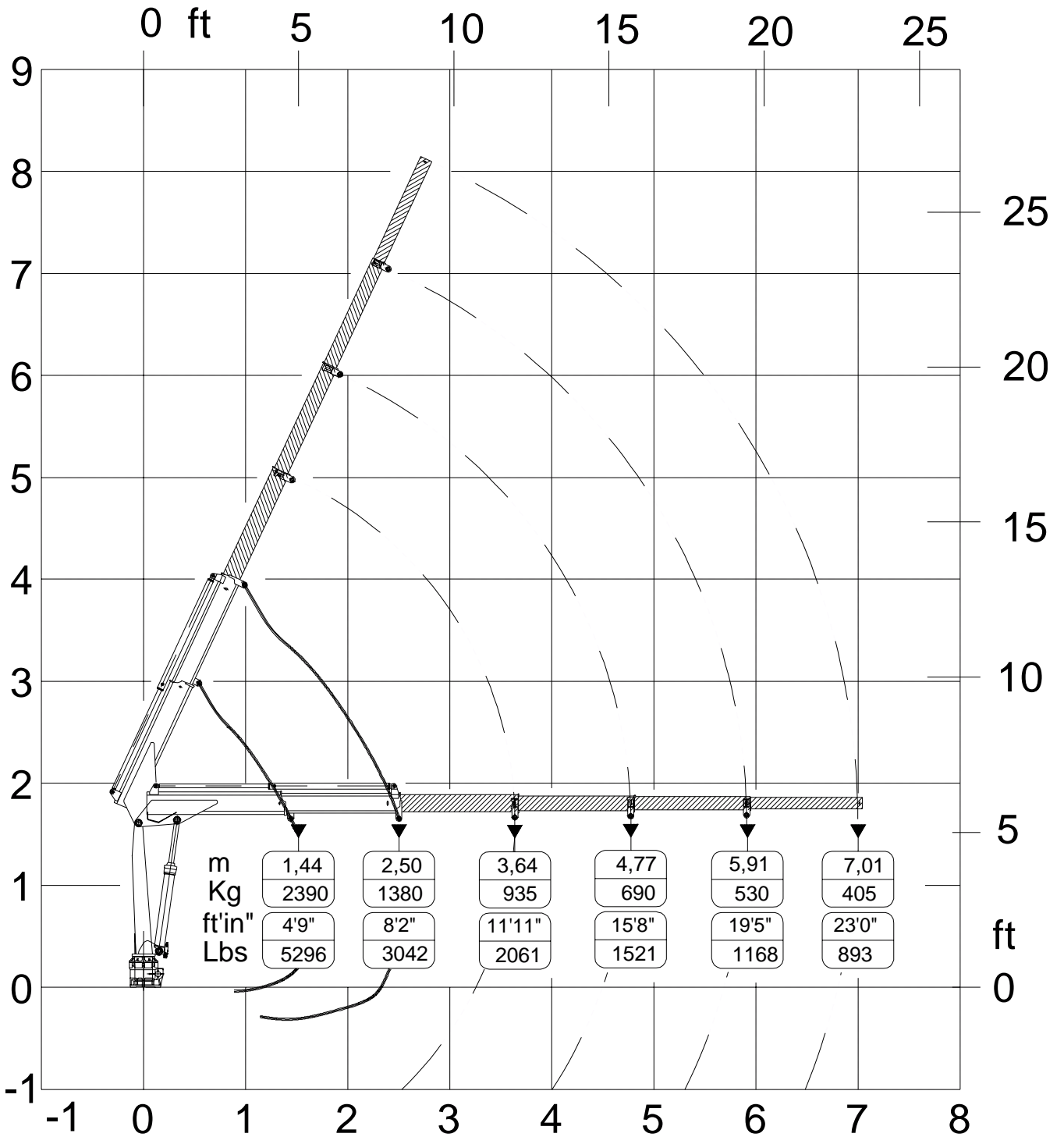
LOAD DIAGRAM TC 300.2



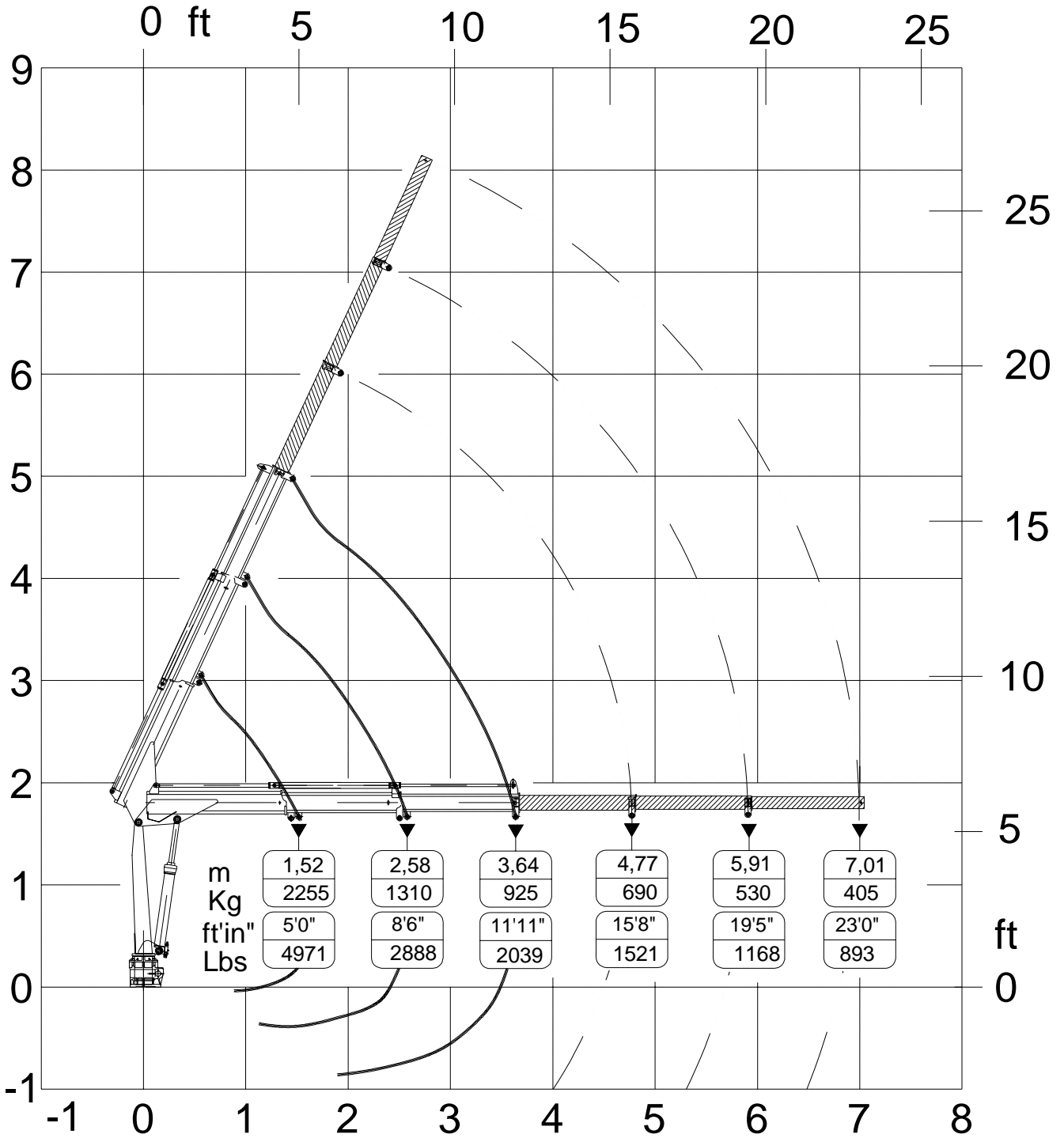
LOAD DIAGRAM TC 300.3



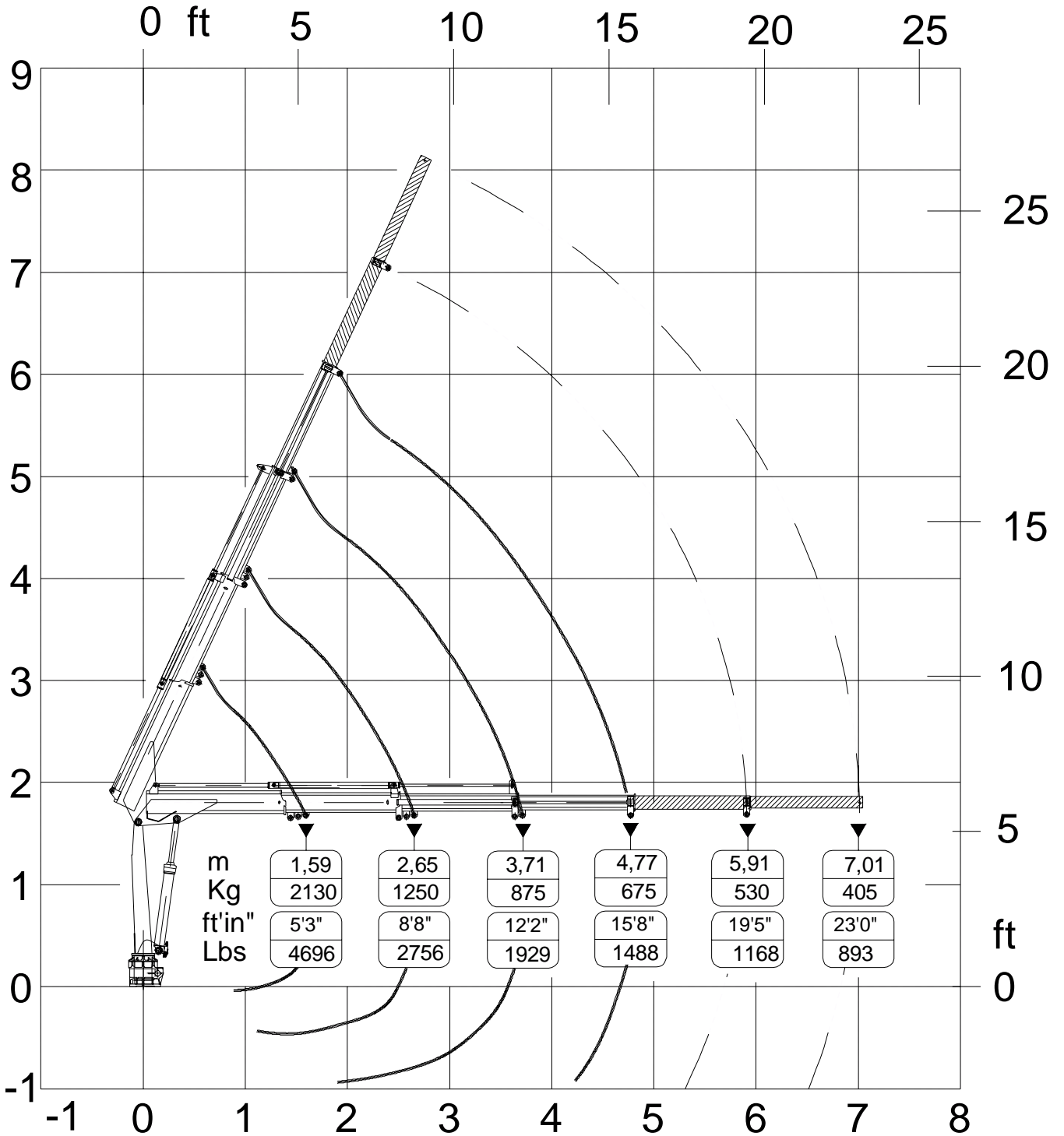
LOAD DIAGRAM TC 350.1



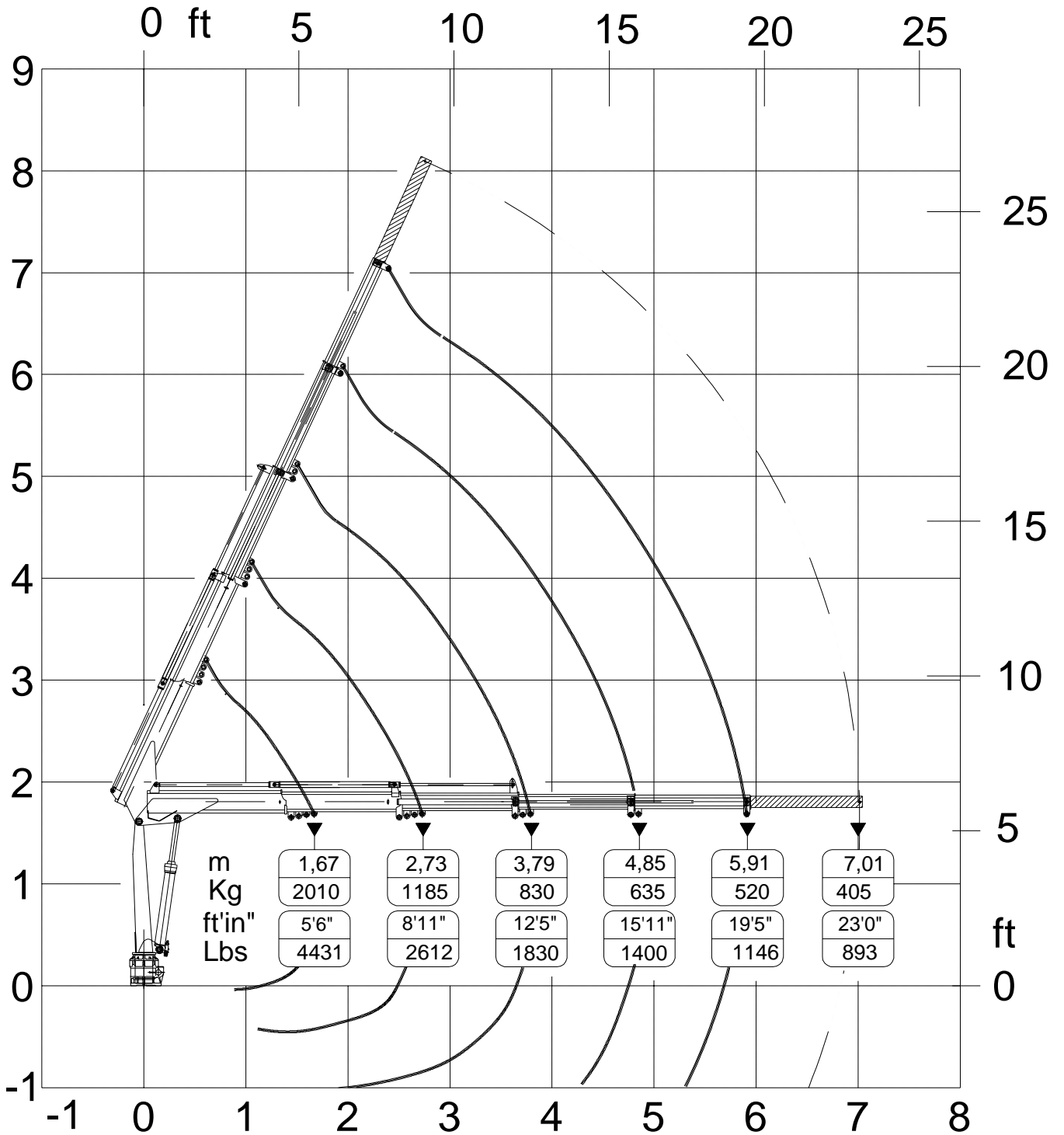
LOAD DIAGRAM TC 350.2



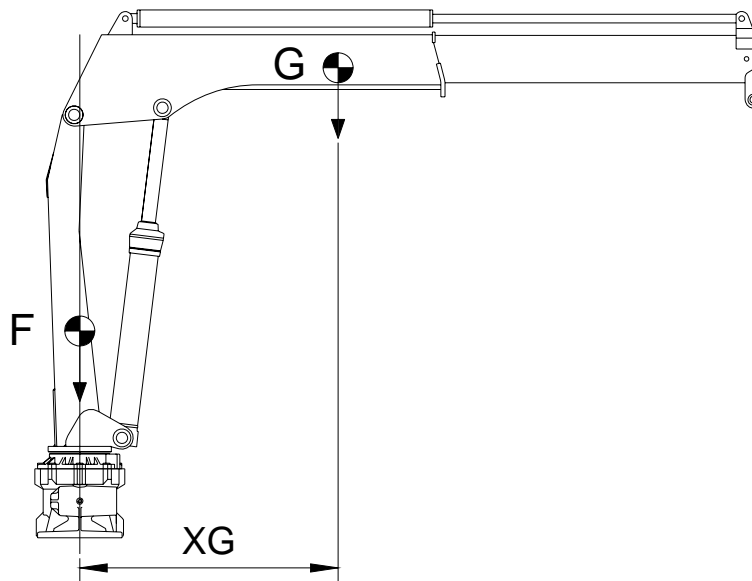
LOAD DIAGRAM TC 350.3



LOAD DIAGRAM TC 350.4



CENTERS OF GRAVITY



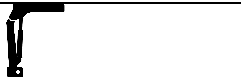



F : Fixed parts weight (base, column, stabilizers)

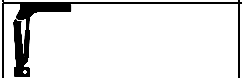



G : Mobile parts weight (boom, extensions, articulation cylinder, extension cylinders)

XG : Distance of G from slewing axis

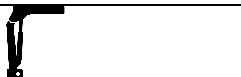



CENTERS OF GRAVITY

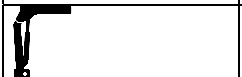
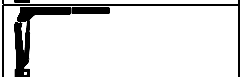


TC 90 TC 100

TC 90.1 TC 100.1	F kg lb	G kg lb	XG m in
	87 192	58 128	0,416 16.4"
		58 128	0,656 25.8"
		68 150	0,978 38.5"
		76 168	1,118 44"

TC 90.2 TC 100.2	F kg lb	G kg lb	XG m in
	87 192	78 172	0,476 18.8"
		78 172	0,814 32.1"
		78 172	1,088 42.9"
		85 187	1,203 47.4"





TC 130 TC 160





TC 130.1 TC 160.1	F kg lb	G kg lb	XG m in
	113 245	62 140	0,396 15.6"
		62 140	0,620 24.4"
		72 160	0,852 33.6"
		80 175	1,067 42"






TC 130.2 TC 160.2	F kg lb	G kg lb	XG m in
	113 245	87 195	0,458 18.1"
		87 195	0,803 31.6"
		87 195	1,018 40.1"
		95 210	1,190 46.9"

CENTERS OF GRAVITY

TC 200

TC 200.1	F kg lb	G kg lb	XG m in
	260 575	70 155	0,335 13.2"
		70 155	0,661 26.1"
		88 195	0,852 33.6"
		101 223	1,193 47"

TC 200.2	F kg lb	G kg lb	XG m in
	260 575	95 210	0,374 14.8"
		95 210	0,851 33.5"
		95 210	1,085 42.8"
		108 240	1,379 54.3"

TC 200.3	F kg lb	G kg lb	XG m in
	260 575	120 265	0,467 18.4"
		120 265	1,034 40.7"
		120 265	1,407 55.4"
		120 265	1,533 60.4"
		128 282	1,726 68"

CENTERS OF GRAVITY

TC 260

TC 300





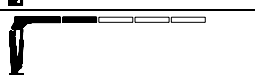

TC 260.1 TC 300.1	F kg lb	G kg lb	XG m in
	260 575	95 210	0,491 19.4"
		95 210	0,779 30.7"
		117 258	1,118 44"
		133 293	1,415 55.7"







TC 260.2 TC 300.2	F kg lb	G kg lb	XG m in
	260 575	130 285	0,563 22.2"
		130 285	1,010 39.8"
		130 285	1,201 47.3"
		146 322	1,468 57.8"

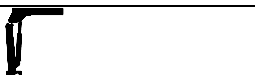



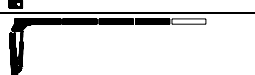

TC 260.3 TC 300.3	F kg lb	G kg lb	XG m in
	260 575	150 330	0,633 24.9"
		150 330	1,179 46.5"
		150 330	1,504 59.2"
		150 330	1,627 64.1"
		158 348	1,779 70.1"

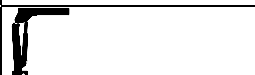





CENTERS OF GRAVITY

TC 350

TC 350.1	F kg lb	G kg lb	XG m in
	320 705	125 275	0,477 18.8"
		125 275	0,852 33.5"
		147 324	1,161 45.7"
		166 366	1,487 58.5"
		180 397	1,789 70.4"
		193 425	2,093 82.4"

TC 350.2	F kg lb	G kg lb	XG m in
	320 705	160 355	0,546 21.5"
		160 355	1,079 42.5"
		160 355	1,321 50"
		179 395	1,604 63.1"
		194 428	1,890 74.4"
		206 454	2,153 84.8"

TC 350.3	F kg lb	G kg lb	XG m in
	320 705	190 420	0,604 23.8"
		190 420	1,228 48.3"
		190 420	1,612 63.5"
		190 420	1,795 70.7"
		206 454	2,047 80.6"
		218 481	2,284 89.9"

TC 350.4	F kg lb	G kg lb	XG m in
	320 705	220 485	0,649 25.6"
		220 485	1,330 52.4"
		220 485	1,804 71"
		220 485	2,103 82.8"
		220 485	2,243 88.3"
		232 511	2,456 96.7"