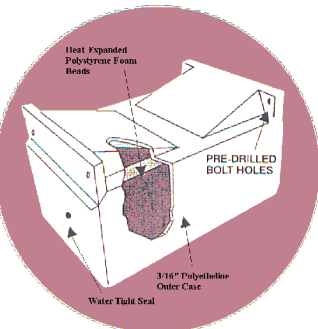


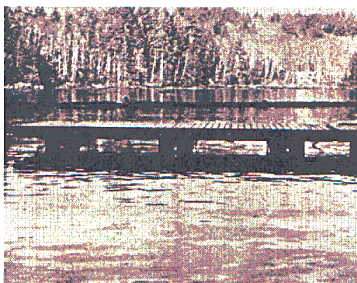
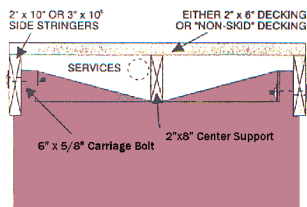
Need new docking? DO IT RIGHT... ONCE...WITH POLYFLOAT



Tough, water-proof outer shell, protects inner foam float from wear and damage!

POLYFLOAT seals out the problems before they begin! The hard, durable casing is impervious to all diesel and fuel oils, which normally play havoc with all unprotected foam floats. Resists fungi, wood-boring and other marine predators, and will remain dry inside and superby buoyant for untold years to come. POLYFLOAT's unique molded design supports either 2" x 10" or 3" x 10" side and 2" x 8" center stringers. This eliminates the need of any additional framing lumber other than final decking. Top of the float is both angled and crowned to automatically drain all rain and wave water

END VIEW OF 4' DOCK SECTION



THE NEW STANDARD FOR AQUACULTURE, MARINA, RESORT, COMMERCIAL & RESIDENTIAL DOCKING

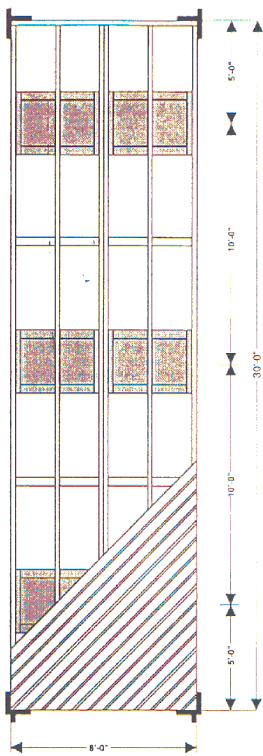
The NPL POLYFLOAT can be utilized and adapted for almost any floating dock installation. Polyfloats can be installed in any configuration to suit the special needs of commercial and marine operators. Buoyancy is protected against all elements while framing lumber remains high and dry on top of the POLYFLOAT.

The benefits of a water-proof, maintenance-free floatation system are obvious. But in addition, the design allows both protection and out-of-site installation of utility services. Electrical, water or sewage lines can be attached along the center support stringer below decking. Final installation has an exceptional neat and tidy appearance. The black floats combine nicely with all forms of decking.

POLYFLOAT is the new "high-tech" answer for dock floatation. The initial unit cost is more than offset by just performance and maintenance, because the POLYFLOAT principle utilizes the absolute minimum of framing material. On large commercial installations this factor alone makes POLYFLOAT the viable alternative.

POLYFLOAT IS COMPETITIVE WITH MOST OTHER SYSTEMS ... BUT SUPERIOR IN CONCEPT, DESIGN AND LONG-TERM PERFORMANCE!

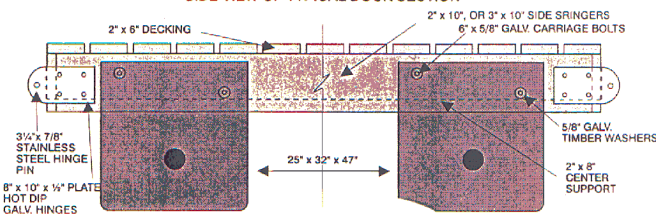
TYPICAL 8' x 30' DOCK INSTALLATION



SPECIFICATIONS

Size: 4' Long x 32" Wide x 25" High
Weight: Approximately 55 pounds
Floatation: Provides a minimum of 30 pounds per sq ft of lift after completion
Color: Black Polyethylene Finish

SIDE VIEW OF TYPICAL DOCK SECTION



SYBERTECH
Waste Reduction Ltd

<http://www.sawrt.com>

1-888-888-7979